



© Elly Geverink

Intensively used and highly recommended: 15 Zar daughters in Holland at Schilder farm

Photo: Elly Geverink

Holstein events underline successful breeding programmes

Genomic breeding values from Germany are not accepted as the world's most reliable for nothing, but however, nothing convinces more than the real success of our sires. Family Schilder sees this proven every day. The breeder from the Netherlands is milking 15 **Zar** daughters at the moment and is so satisfied that he still uses this "old master" intensively. The same is true for **Goldday** and **Elburn RC** as well as **Malden** and **Laron P**. They already belonged to the top sires as only genomic tested bulls and they have not lost their attractiveness. Now they also have daughters.

Laron P started the beginning of the show season with a bang as he is the sire of the heifer champion Sendra at the show "Landesschau der Thüringer Holsteinzüchter 2013". Besides the interesting competition for the most beautiful

cow in Thuringia awarded to HaH Marianne, three progeny groups were also shown.

Frosko presented himself as a production sire that transmits good feet & legs and functional udders. **Roumo**, having an interesting combination of milk yield and components, had a group of functional young cows with lots of strength, correct rumps and faultless feet & legs. Elburn RC whose sons dominate the genomic lists proved his sire qualities. His harmonic daughters excelled with their



Samburu daughter group at the show Blickpunkt Rind

development potential, open ribs and very good legs.

Next was the "Blickpunkt Rind 2013" show in Brandenburg where interested breeders met each other. With best autumn weather, the visitors celebrated lots of successes of German sires – so daughters of **Sascha**, **Eminem** and **Goldday** were leaders and **Lonar** daughter Loreal was able to achieve the reserve title of the young cows, closely behind Princess who later became the grand champion.

Besides good Lonar daughters in the competition, a group of his second crop daughters was presented that confirmed his strengths again. The group was characterized by very nice type, sufficient frame and excellent bone quality. The daughters of the

continued on next page

Continued: Holstein events underline successful breeding programmes

popular bull Samburu were from second crop as well. They presented themselves uniformly as trouble-free, strong cows without any faults. Daughters from the test period of the production sire **Bazuli** were shown. They had lots of strength and body depth as well as udders that are milked easily. Moreover, young daughters of the genomic bull **Gold-Red** were presented. They had very good conformation and could be shown in both breeds due to the VRC gene of Gold-Red.



Gold-Red daughter Golan

The next highlight of the show season was "Abends in Hamm" at the RUW Show. 170 top-class animals from the big breeding area

of RUW competed for the grand champion title. At the end, the Red WIT A Klasse was awarded that title. Besides many good Holstein daughters of GGI sires, especially the Red ones revealed the quality of the German breeding program.

Two progeny groups were presented in Hamm as well: a daughter group of **Elburn RC** and of the newcomer **Jeep**. The Elburn daughters excelled with the same characteristics as already in Thuringia. The daughters of the outcross sire Jeep presented themselves as uniform, strong cows with very harmonic appearance. They enthused especially with well-attached udders and capacity.

The show "Nikolausschau" of the RSA in Bismark was a worthy way to end the show year 2013. The well-attended event offered lots of highlights and was crowned by awarding Roxanne the title "Miss RSA 2013".

Besides the very good cows at the show, the four progeny groups presented were well-received by the visitors. The second crop daughters of **Toscano** and **Van Gogh** were viewed with mixed emotions since these two excellent sires unfortunately passed away



Elburn RC daughter Indiana

too early, and there is no semen available anymore.

This was different when the daughter groups of **Paston** and **Baldosi** were shown. The longevity specialist Paston convinces with good udders and very well set, very clean feet and legs. Bobas son Baldosi, with his first daughters, shows himself as a sire to improve especially body traits and rumps.

Detailed progeny reports can be obtained on www.ggi.de under "Progeny" in the menu "News" on the left hand side.

Current proofs of GGI top polled sires

(December 2013)

	Name	Herdbook-No.	Interbull-No.	Sire	Dam's Sire	Milk-kg	Fat-%	Fat-kg	Protein-%	Protein-kg	RZM	Rel. RZM in %	Dairy type	Body	Feet & Legs	Udder	RZE	RZS	RZN	RZR	RZG	Calving ease	Brachyspina	Polled	aAa	Name
Daughter proven	Magna P RC BYC	506286	CAN 00007823945	Bolton	September	+1139	-0,08	+38	-0,09	+29	113	94	108	107	111	124	123	115	108	98	121	85	BYC	Pp	423	Magna P RC
	Laron P	923151	NLD 000497740632	Lawn Boy	Shottle	+1003	+0,00	+42	-0,03	+32	111	92	113	107	119	123	126	119	126	113	132	84	BYF	Pp	234165	Laron P
Polled genomic Holstein	Marcinos	678161	NLD 000534083054	Man-O-Man	Titanic	+1570	+0,05	+70	+0,08	+61	136	74	95	110	119	107	114	112	112	103	141	109	BYF	Pp	216435	Marcinos
	Lacomy RC	823034	DNK 003870002890	Laron P	Jeeves	+739	+0,19	+49	+0,13	+38	120	73	101	106	117	110	115	119	128	118	138	98	BYF	Pp	n.a.	Lacomy RC
	Twice P RC	680230	NLD 000880469384	Twist	Man-O-Man	+763	+0,18	+49	+0,17	+43	123	71	101	104	120	110	116	113	123	112	138	114	BYF	Pp	n.a.	Twice P RC
	Revival P RC	679585	DEU 000537388807	Rematch P	Man-O-Man	+1374	+0,00	+57	+0,04	+50	128	71	106	123	116	120	127	98	117	100	135	108	BYF	Pp	345261	Revival P RC
	Drako RC	811451	NLD 000545145372	Destry	Lawn Boy	+1009	-0,25	+16	-0,02	+33	112	73	112	101	112	132	126	119	128	113	134	97	BYF	Pp	231465	Drako RC
	Sake P	680123	DEU 000537834651	Satchel P	Atwood	+1070	-0,12	+32	-0,05	+32	114	71	110	112	124	130	134	118	124	106	133	97	BYF	Pp	n.a.	Sake P
	Late P RC	680117	DEU 000537482554	Ladd P	O-Man	+486	+0,20	+39	+0,13	+29	114	71	95	113	125	126	129	123	118	109	132	112	BYF	Pp	n.a.	Late P RC
	Epoly P RC	619068	DEU 000355203392	Epic	Mr.Sam	+1211	+0,14	+64	-0,02	+39	122	71	115	107	117	105	115	100	122	98	130	103	BYF	Pp	132546	Epoly P RC
	Shanapol P RC	823035	CAN 000107270533	Observer	Mitey P	+1094	-0,09	+35	-0,06	+31	114	73	110	93	102	121	112	132	123	107	130	110	BYF	Pp	n.a.	Shanapol P RC
	Deputy P RC	823012	BEL 000110549935	Destry	Lawn Boy	+483	-0,17	+3	+0,08	+24	106	73	105	88	108	132	120	109	127	119	127	107	BYF	Pp	342156	Deputy P RC
Minzo PP RC	679452	NLD 000752635059	Mitey P	Lawn Boy	+589	+0,02	+26	+0,10	+30	112	73	103	102	109	108	110	127	113	105	123	108	BYF	PP	432561	Minzo PP RC	
Polled genomic Red Holstein	Label P	917510	NLD 000743121044	Ladd P	Sunrise	+1235	-0,08	+44	+0,34	+73	137	71	111	118	122	116	127	125	127	110	153	112	BYF	Pp	n.a.	Label P
	Glamour P	588019	NLD 000713313332	Glorious	Lawn Boy	+1316	+0,03	+58	+0,22	+65	134	71	98	100	120	111	115	103	119	105	142	109	BYF	Pp	n.a.	Glamour P
	Capple P	917514	DEU 000769439090	Colt-P	Destry	+1663	-0,49	+23	-0,09	+48	118	72	107	99	124	135	132	120	128	113	141	111	BYF	Pp	n.a.	Capple P
	Citation P	298211	USA 000142158979	Ladd P	Shottle	+1027	+0,16	+57	+0,10	+44	121	71	114	125	114	127	131	120	127	113	141	104	BYF	P	n.a.	Citation P
	Largo P	262333	ITA 016990385890	Laron P	Ruacana	+1190	+0,11	+60	+0,14	+53	127	73	107	100	119	113	117	122	123	107	141	84	BYF	Pp	n.a.	Largo P
	Colour P	917470	NLD 000539446391	Colt-P	Destry	+1574	-0,29	+39	+0,00	+53	123	72	116	116	116	133	134	110	122	114	140	105	BYF	Pp	234165	Colour P
	Lostau P	927401	DEU 000354913687	Laron P	Spencer 2	+1616	+0,09	+76	+0,12	+67	136	73	112	103	113	115	117	103	112	102	140	97	BYF	Pp	342	Lostau P
	Legolas P	960800	DEU 000666179011	Laron P	Mr.Burns	+1273	-0,04	+49	+0,12	+55	126	73	111	103	121	119	123	107	121	108	139	98	BYF	Pp	342165	Legolas P
	Airy P-Red	298158	USA 000070611185	Colt-P	Pembroke	+1675	-0,12	+59	-0,09	+49	123	72	106	97	106	121	115	120	120	117	139	114	BYF	Pp	n.a.	Airy P-Red
	Snagria P	917516	DEU 000537792663	Satchel P	Fidelity	+1230	+0,00	+51	+0,10	+51	124	71	109	108	112	119	120	115	122	109	138	105	BYF	Pp	n.a.	Snagria P
	Scandic PP	917517	DEU 000537288283	Stronger P	Lypoll P	+1209	-0,26	+28	+0,10	+51	121	71	89	104	117	111	113	120	115	97	129	102	BYF	PP	n.a.	Scandic PP
	Laptop PP	924705	DEU 000354850803	Laron P	Mr.Sam	+776	+0,08	+39	+0,03	+29	110	73	109	114	115	111	119	111	119	111	124	98	BYF	PP	324156	Laptop PP

December proof run of GGI top G-Genomic sires

A total of 152 new genomic Holsteins and 38 Red Holsteins were added to the top list in December and now we have new leaders in both lists.

Among the Holsteins, **Lexington** is the new No.1 with gRZG 162. The Lector son out of the family of Manur is clearly above average in all traits and has an interesting sire line-up. It is also satisfying to see that

the “old” top bulls still belong to the top of the list despite the many newcomers – so that **Sundance**, **Borussia** and **Big Point** did

not lose some of their appeal.

Among the Red Holsteins, there is not only a very complete sire on top with **Label P**, but

also a carrier of the popular polled gene. Moreover, Label P’s bloodline has to be

admired, recommending him for wide use.

The power of German cattle breeding especially stands out among the Red Holsteins.

Bulls like **Eragon**, **Fageno**, **Develop** and **Mainstreet** come from sires that led the German list in their time as well.

Except for Label P, there are numerous new bulls in the polled segment. So **Glamour P**, **Capple P**, **Citation P** and many others

shined not only with the polled gene, but also with high breeding values and interesting pedigrees.



Lexington 619078 (Lector x Time x Stol Joc x O-Man)

CVF BLF BYF
aAa ---

The genomic top list has a new leader: Lexington. With gRZG 162, he sets new standards in German Holstein breeding. When looking at his single values, you won't find weaknesses as well. Such combination of high production with positive components, excellent values for the fitness and functionality traits as well as outstanding values for transmission for feet & legs and udder is unequaled so far. Together with the excellent breeding value level of Lexington, he also has a different bloodline as his sire line-up stands for balanced breeding values on a high level, but is unique in the absolute top of the list. Moreover, Lexington proves that breeding is not based on contingency in times of genomics. He descends from the exceptional American cow TUI Onyx Nick, whose strong genetics came to Germany via Vision-Gen RUW Neblina and then found its way to Scandinavia via the HighlightSALE in Hamm. It became one of the most important cow families in Europe.



Scan QR-code for detailed online breeding values



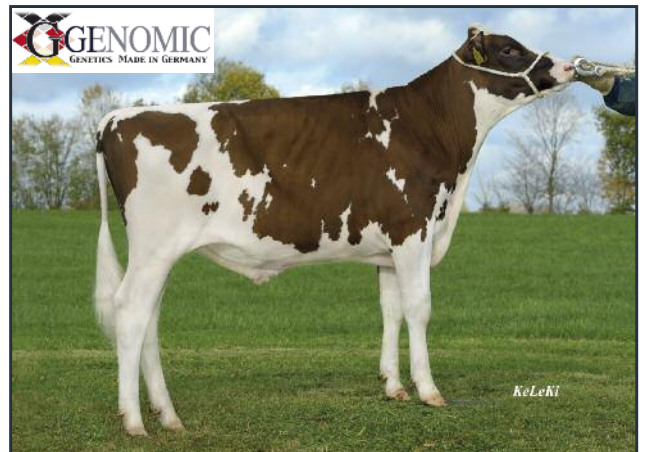
	88	100	112	124
Dairy Character (Index)				111
Body (Index)				106
Feet and legs (Index)				125
Udder (Index)				129
gRZE (Index)				132

Label P 917510 (Ladd P x Sunrise x Spencer2 x Talent2)

CVF BLF BYF
aAa ---

The polled gene always had a special attraction so that some breeders have tried in many generations to produce sires that bring adequate breeding progress on the one hand and spread the polled gene in the population on the other hand. Genomic breeding value estimation provided new opportunities for this.

Even though the variety has increased rapidly over the past few years the polled young bulls play catch-up behind “normal” bulls of the same age insofar as breeding values are concerned due to the enormous breeding progress. That was true until the December proof run, but the top list of the genomic Red Holsteins is now led by a polled sire: Label P. Label P descends via Ladd P from an interesting Dutch cow family and, therefore, can be used widely. His dam’s line always convinced especially with high protein production. This excellent quality can be seen in Label P now who shines with very good transmission for milk yield with +0.34 % protein. This heifer bull does not show any weaknesses for conformation and, in addition, excels with excellent udder health, good daughter fertility and very high longevity.



	88	100	112	124
Dairy Character (Index)				111
Body (Index)				118
Feet and legs (Index)				122
Udder (Index)				116
gRZE (Index)				127



Current proofs of GGI top daughter proven sires

(December 2013)



Holstein

Red Holstein

Name	Herdbook-No.	Interbull-No.	Sire	Dam's Sire	Milk-kg	Fat-%	Fat-kg	Protein-%	Protein-kg	RZM	Rel. RZM in %	Daughters	Herds	Dairy type	Body	Feet & Legs	Udder	RZE	RZS	RZN	RZR	RZG	Calving ease	Brachyspina	Polled	aAa	Name
Guarini	811141	DEU 000580675108	Goldwyn	O-Man	+1203	-0,08	+42	+0,19	+61	132	96	192	88	106	118	107	127	125	127	124	118	149	112	BYF	312546	Guarini	
Elburn RC	636446	NLD 000359507595	Mr.Burns	O-Man	+1943	-0,35	+42	+0,03	+69	136	90	116	77	106	119	119	111	121	103	117	102	142	90	BYF	312456	Elburn RC	
Billard	676026	DEU 000535272163	Billion 3	O-Man	+1779	-0,19	+52	+0,00	+60	133	94	148	121	117	115	107	113	118	110	124	101	140	106	BYF	321465	Billard	
Jugador	811214	ITA 019990478137	Jardin	Finley	+2285	-0,48	+40	+0,06	+85	145	92	78	57	105	119	112	111	118	100	95	99	139	88	BYF	126345	Jugador	
Omega	802670	IRL 272004770562	O-Man	Manat	+904	+0,31	+68	+0,22	+53	132	98	641	150	80	96	104	92	93	110	125	113	139	103	BYF	513462	Omega	
Goldday	635357	NLD 000475750563	Goldwyn	O-Man	+1016	-0,21	+20	+0,07	+41	118	97	355	246	120	129	117	126	134	106	124	126	138	113	BYF	234165	Goldday	
Gunnar	804049	DEU 001500838492	Goldwyn	Ford	+1221	-0,15	+35	+0,06	+48	123	95	119	50	120	113	112	129	129	105	120	112	137	113	BYF	342156	Gunnar	
Biron	148544	DEU 000352846982	Bertil	Goldwyn	+1249	+0,05	+56	+0,17	+59	134	80	21	19	97	111	104	114	113	110	108	107	137	89	BYF	n.a.	Biron	
Gitan	148546	NLD 000520023053	Gibor	Olympic	+1768	-0,15	+56	-0,05	+55	130	87	80	74	81	79	108	101	95	118	116	110	137	101	BYF	n.a.	Gitan	
NOG Jeto	490920	DEU 000116481642	Juwel	Laudan	+2345	-0,36	+55	-0,19	+58	131	95	149	76	114	82	131	105	113	103	110	101	136	105	BYF	651243	NOG Jeto	
Frosko	840929	FRA 002921633119	Frosty	Shottle	+1534	+0,13	+76	+0,03	+55	133	93	119	63	108	100	106	107	107	120	112	98	136	95	BYF	135246	Frosko	
Omatido	673730	DEU 000579542620	O-Man	Aaron	+998	-0,12	+29	+0,23	+57	129	95	129	111	86	104	118	110	113	122	110	100	135	109	BYF	432516	Omatido	
Bobas	840609	NLD 000350854757	Dutch Boy	Novalis	+2030	-0,43	+36	-0,05	+64	132	99	3746	809	108	93	102	87	92	116	122	101	135	99	BYF	123564	Bobas	
Leko	811087	NLD 00042598456	Laudan	Jocko Besne	+1441	-0,19	+39	-0,02	+46	123	98	544	225	104	106	120	105	114	119	123	99	134	110	BYF	651243	Leko	
Sesterz	567451	DEU 000115189928	Shottle	Adam II	+1693	-0,27	+41	-0,10	+47	123	95	131	53	105	120	100	111	113	111	125	109	133	105	BYF	432561	Sesterz	
Omjet	673219	DNK 002371401544	O-Man	Winchester	+852	+0,40	+74	+0,21	+50	131	98	999	479	84	105	97	103	99	110	116	105	133	107	BYF	153246	Omjet	
Borsati	811243	DEU 000535421212	Bolton	O-Man	+1781	-0,30	+40	-0,05	+55	128	94	179	92	109	126	105	128	128	120	112	93	133	93	BYF	312456	Borsati	
NOG Mato	490734	DEU 000351002737	Mascol ET	Laudan	+871	-0,08	+28	+0,14	+44	121	93	88	39	108	102	124	104	115	117	116	113	133	109	BYF	324156	NOG Mato	
NOG Bero BYC	490777	NLD 000490916180	Bolton	Best	+1895	-0,17	+60	+0,00	+64	136	93	85	47	108	111	121	113	122	93	107	83	133	98	BYC	435126	NOG Bero	
Tunderbolt	505726	USA 000062188536	Titanic	Convincer	+2160	-0,30	+55	-0,11	+61	133	94	97	81	110	103	113	100	108	115	108	96	133	98	BYF	n.a.	Tunderbolt	
Santis	804054	ITA 020990212075	Shottle	Zecher	+1479	-0,04	+57	-0,05	+45	124	94	98	48	106	104	92	117	108	114	115	116	133	107	BYF	n.a.	Santis	
Gorch Fock	674940	DEU 000350318046	Goldwyn	Marshall	+1476	-0,17	+42	+0,02	+52	127	96	174	130	111	102	102	123	117	110	117	94	132	103	BYF	234165	Gorch Fock	
Roumo	840970	NLD 000521313739	Roumare	O-Man	+873	+0,31	+66	+0,20	+49	130	91	112	59	87	102	109	100	105	116	100	132	115	BYF	435216	Roumo		
Mendez	811139	DEU 000813449519	Mascol ET	Jesther	+1818	-0,35	+36	-0,08	+53	126	95	112	57	96	103	120	103	110	113	113	100	132	103	BYF	135264	Mendez	
NOG Barkee RC	490925	DEU 000352642487	Mr.Burns	Jefferson	+2131	-0,63	+17	-0,04	+68	132	89	79	65	122	108	111	105	113	91	109	103	132	88	BYF	234156	NOG Barkee RC	
Manzini	811244	DEU 001500151755	Mac	O-Man	+1156	-0,01	+46	-0,14	+25	111	93	101	49	115	104	117	130	129	112	121	116	131	111	BYF	132564	Manzini	
Eminem	810944	DEU 001264135582	Eminenz	Maloy	+710	+0,02	+31	+0,18	+42	120	99	7571	2101	109	84	111	116	111	101	124	102	131	88	BYF	351426	Eminem	
Giseh	671974	DEU 000579491521	Gibor	Bombay	+1504	-0,23	+37	+0,01	+52	126	98	460	304	99	82	111	100	99	110	111	110	131	99	BYF	513642	Giseh	
Balboa	636277	DEU 000352340183	Baxter 2	O-Man	+2172	-0,22	+64	-0,14	+58	133	89	78	39	100	124	95	93	101	97	113	106	130	103	BYF	n.a.	Balboa	
Joerne	804142	DNK 004181502008	Jardin	Lambada	+1745	-0,20	+50	+0,05	+64	135	93	94	45	98	97	95	98	95	98	104	106	130	96	BYF	423561	Joerne	
Short Cut	675260	DEU 000350451061	Shottle	Lambada	+1524	-0,11	+51	-0,10	+41	121	95	120	88	94	116	113	118	121	107	113	106	130	106	BYF	342516	Short Cut	
NOG Exter	490930	DEU 001501195201	Eleve	Modest	+1106	+0,03	+48	+0,07	+45	124	91	111	40	109	109	108	111	114	107	113	106	130	107	BYF	324156	NOG Exter	
Sheffield	674370	DEU 000662670076	Shottle	Jesther	+1333	-0,02	+53	-0,03	+42	122	95	133	99	109	107	117	108	116	123	109	104	130	86	BYF	132456	Sheffield	
Soldo	148545	NLD 000525392112	Socrates	O-Man	+1149	+0,08	+55	+0,02	+41	123	86	42	37	114	104	115	104	112	112	118	99	130	107	BYF	n.a.	Soldo	
Bann	822347	DEU 001502294946	Baxter 2	O-Man	+1310	-0,08	+46	-0,02	+42	121	90	101	63	104	114	99	101	105	110	120	113	129	104	BYF	423615	Bann	
Sterngold	676534	DEU 000535278625	Stol Joc	Shottle	+1170	-0,28	+19	-0,10	+29	110	96	238	183	99	94	132	117	122	128	129	95	129	108	BYF	234156	Sterngold	
Pius	148527	DEU 000352456513	Planet	O-Man	+1207	-0,18	+31	-0,10	+30	112	84	34	25	102	120	101	126	122	110	123	117	129	109	BYF	315246	Pius	
Elenus	567486	DEU 000535086804	Encino	Riverland	+1276	-0,08	+44	+0,08	+52	127	93	86	67	94	87	108	110	104	116	106	97	129	110	BYF	243615	Elenus	
Playman	822365	DEU 001500936230	Pagewire	O-Man	+2498	-0,45	+50	-0,16	+67	135	93	128	83	112	105	99	86	94	103	106	101	129	92	BYF	234165	Playman	
Ronin	145582	DEU 000535011894	Roumare	Laibert	+1242	-0,24	+26	+0,11	+54	126	95	127	110	95	85	104	118	107	111	109	95	129	109	BYF	423156	Ronin	
Wasaki	811250	DEU 001265205191	Watha	O-Man	+1127	-0,07	+39	+0,07	+45	123	93	99	52	103	113	105	110	113	111	116	101	128	107	BYF	324165	Wasaki	
Joschua	840911	DEU 000116283222	Jose	O-Man	+873	-0,08	+28	-0,07	+22	108	94	112	65	83	81	121	110	107	117	123	124	128	121	BYF	315426	Joschua	
Omgen	673458	NLD 000424009801	O-Man	Aaron	+1028	-0,10	+32	+0,07	+42	120	94	148	112	88	113	116	113	116	112	113	101	128	103	BYF	n.a.	Omgen	
Mace	674933	NLD 000473562199	Mascol ET	Marshall	+1078	-0,13	+31	-0,10	+26	110	94	105	92	104	84	123	108	110	127	119	115	128	121	BYF	243615	Mace	
Bodrum BYC	676321	DEU 000535421322	Bolton	Shottle	+1630	-0,04	+63	-0,21	+33	118	94	171	110	120	119	106	138	134	119	115	92	128	76	BYC	432156	Bodrum	
Malden	917298	DEU 000535762066	Malvoy	Mascol ET	+2153	-0,40	+50	+0,00	+74	136	86	42	28	100	88	133	106	115	116	117	102	146	111	BYF	351426	Malden	
Maico	917288	DEU 000535766947	Malvoy	Ramos	+1943	-0,40	+42	-0,10	+56	125	89	71	61	103	104	117	105	112	104	120	114	136	101	BYF	342156	Maico	
Tableau	916966	DEU 000768555470	Talent2	Faber	+1115	-0,42	+9	+0,15	+52	119	99	1764	975	111	84	119	122	119	109	123	101	133	118	BYF	234165	Tableau	
Laron P	923151	NLD 000497740632	Lawn Boy	Shottle	+1003	+0,00	+42	-0,03	+32	111	92	129	87	113	107	119	123	126	119	126	113	132	84	BYF Pp	234165	Laron P	
Carie	599452	DEU 000116525529	Carmano	September	+1321	-0,11	+46	-0,10	+36	114	87	83	60	110	116	128	111	125	115	117	116	130	87	BYF	342516	Carie	
Lake P	917180	DEU 000535272164	Lawn Boy	Faber	+1756	-0,45	+31	+0,04	+64	128	89	69	56	104	107	105	108	109	103	110	103	130	88	BYF Pp	n.a.	Lake P	
Casting	917279	DEU 000116534044	Carmano	Reno 2	+948	-0,05	+																				

December proof run of GGI top daughter proven sires

Breeding value estimation of daughter proven bulls is relatively unspectacular nowadays since the top-class sires of today were already spoken about as only genomic tested bulls.

So, indeed, undefeated No.1 is still **Guarini**, but the hottest newcomer in the Top-10 of the Holsteins is **Elburn RC**. By the way, both bulls not only convince with good daughters, but also with highly tested sons. The same is true for **Goldday** who shows a very nice development. Jardin son **Jugador** is remarkably high as well and he excels with

his outcross pedigree as well as good production figures.

Besides the red carrier Elburn RC, there is a new No.1 for Red Holstein breeders: **Malden**. This heifer bull offers good fitness values and very good feet and legs in addition to high milk yield. Furthermore, through his dam's sire Mascol, he makes available new blood for the Red Holstein population. This can be said about his half brother **Maicon**, too who has popular Ramos blood in his veins.

Well-known sires like **Tableau**, **Laron P** and **Edway** also proved well.

Find our event schedule and progeny videos on our homepage www.ggi.de

German version available as PDF: www.ggi.de




Elburn RC 636446
(Mr. Burns x O-Man x BW Marshall x Aaron)

CVF BLF BYF
aAa 312456



Scan QR-code for detailed online breeding values

Elburn was already a top seller when only a genomic proven bull because he showed very good breeding values on the one hand and is out of a famous cow family on the other hand. His dam is the full sister of the former list leader Snowman. Elburn RC has been intensively used early as a sire of sons and his daughters and sons are on the top of the lists.

The production capability of his daughters and expected phenotypic strength was impressively shown by his daughters at "Landesschau Thüringer Holsteinzüchter 2013" and "Abends in Hamm". His harmonic daughters excel with their development potential, open ribs, very good feet & legs and correct rumps.

Elburn RC can be considered a production sire that brings sufficient conformation to breed cows that are able to realize very high production over several lactations. It does not matter if Black or Red, Elburn daughters are efficient cows that every breeder wishes to have.



	88	100	112	124
Dairy Character (Index)				106
Body (Index)				119
Feet and legs (Index)				119
Udder (Index)				111
RZE (Index)				121



Carie 599452
(Carmano x Storm x Laredo Red x Milestone Red)

CVF BLF BYF
aAa 342516



Carie's high rank is not a surprise – four generations of successful bull dams on the one side and "Mr. Fitness" Carmano on the other. Carie himself is the highest son of his popular sire Carmano and his breeding values exactly give the picture that a breeder has in mind when reading the sire line-up in his pedigree.

Good dairy type, adequate frame and good feet & legs of his daughters could be inherited equally from his sire or his dam's line. Besides dry, parallel set feet & legs and the high foot angles, especially his very fluent locomotion is impressive. Udders shine as well and the breeders appreciate the somewhat longer teats of his daughters.

In contrast, production can be traced back to Carie's dam's line whereas you can clearly see Carmano's influence on his fitness values and milkability. Carie can be considered an all-round sire that will enjoy great popularity.



	88	100	112	124
Dairy Character (Index)				110
Body (Index)				116
Feet and legs (Index)				128
Udder (Index)				111
RZE (Index)				125



Current proofs of GGI top G-Genomic sires

(December 2013)



Name	Herdbook-No.	Interbull-No.	Sire	Dam's Sire	Milk-kg	Fat-%	Fat-kg	Protein-%	Protein-kg	gRZM	Rel. gRZM in %	Dairy type	Body	Feet & Legs	Udder	grZE	grZS	grZN	grZR	grZG	Calving ease	Brachyspina	Polled	aAa	Name
Lexington	619078	DNK 003372305844	Lexor	Time	+1420	+0,15	+74	+0,17	+66	140	71	111	106	125	129	132	122	133	117	162	128	BYF	n.a.	Lexington	
Sundance	679590	NLD 000882811556	Sudan	Planet	+1382	+0,33	+91	+0,19	+66	142	73	93	105	117	112	115	134	128	110	158	110	BYF	231465	Sundance	
Borussia BYC	619018	DEU 001602887847	Butch	Ramos	+1453	+0,22	+83	+0,22	+72	145	73	97	96	115	108	109	124	124	117	157	120	BYC	345216	Borussia	
Big Point	619043	DEU 000666050471	Bookem	Man-O-Man	+1800	-0,21	+51	+0,07	+69	138	73	112	114	123	130	134	124	134	103	157	112	BYF	315246	Big Point	
Grizzly	804319	DEU 001404580502	Genesis	Man-O-Man	+1742	-0,26	+44	+0,09	+69	137	71	104	113	113	124	124	109	133	118	155	115	BYF	n.a.	Grizzly	
Story	680226	NLD 000754619257	Stellando	Gerard	+2226	-0,18	+70	+0,03	+79	146	71	93	122	115	123	126	121	124	95	155	99	BYF	n.a.	Story	
Exeter	619072	NLD 000871253297	Ecoyne Isy	Bolton	+2085	-0,19	+65	+0,07	+79	145	71	96	107	105	111	110	116	123	112	154	105	BYF	n.a.	Exeter	
Beladi	811470	DNK 003372305714	Bookem	Massey	+1375	+0,05	+62	+0,09	+56	132	72	98	106	113	132	126	123	130	120	154	107	BYF	435126	Beladi	
Guard	680120	DEU 000537611409	Guarini	Leif	+1175	+0,12	+61	+0,23	+63	136	73	103	110	119	122	125	121	127	114	153	103	BYF	n.a.	Guard	
Bube ET	149986	DEU 000355165348	Beacon	Jeeves	+2026	-0,15	+67	-0,07	+61	135	73	110	105	124	111	119	109	135	118	153	107	BYF	234165	Bube ET	
Banesto	811448	DNK 002371402371	Bookem	Xacobeo	+1551	-0,13	+50	+0,07	+60	133	73	119	110	122	134	136	118	129	114	153	111	BYF	342156	Banesto	
Bolt RC	570432	NLD 000940147494	Bookem	Spencer 2	+1342	+0,03	+58	+0,17	+63	136	73	103	110	119	121	125	129	124	114	153	103	BYF	n.a.	Bolt RC	
Lionel	811472	DEU 000537598624	Lexor	Goldwyn	+853	+0,33	+68	+0,28	+56	134	71	111	114	120	124	129	133	126	111	153	113	BYF	132564	Lionel	
Dacor	151535	NLD 000696353235	Danillo	Planet	+1681	-0,19	+49	+0,06	+63	134	73	108	108	126	118	126	116	126	120	152	109	BYF	351426	Dacor	
Bocelli RC	619065	DNK 004181503003	Bookem	Destry	+1447	-0,12	+46	+0,08	+58	131	73	108	100	122	113	118	117	134	123	152	115	BYF	324156	Bocelli RC	
Dastin	804305	NLD 000882493602	Danillo	Planet	+1455	+0,06	+66	+0,11	+61	135	73	109	114	134	119	132	105	127	113	152	115	BYF	315246	Dastin	
Broadway	679992	DEU 000537670752	Bookem	Garrett	+2137	-0,34	+50	-0,08	+63	134	73	105	110	111	126	124	126	128	114	152	110	BYF	432165	Broadway	
Sunkiss	679580	DEU 000769844762	Sudan	Otto	+2242	-0,16	+74	-0,05	+71	141	73	109	106	118	118	122	120	120	105	152	97	BYF	354126	Sunkiss	
Go Now RC	679573	NLD 000709809726	G-Force	Ralstorm	+1748	+0,04	+76	+0,15	+75	145	71	116	114	121	112	123	126	114	100	152	102	BYF	234156	Go Now RC	
Mercury	619076	DEU 000666188940	Mogul	Domain	+1544	+0,00	+63	-0,03	+49	128	71	107	102	114	133	127	137	136	109	152	112	BYF	n.a.	Mercury	
Maximum	678170	DEU 000769509874	Man-O-Man	Laudan	+1788	-0,25	+47	+0,03	+64	134	73	111	96	116	115	116	116	131	119	152	122	BYF	234165	Maximum	
Marmor	804266	DEU 001303941239	Man-O-Man	Goldwyn	+1228	+0,28	+79	+0,28	+70	144	74	119	104	120	110	119	105	117	115	152	112	BYF	432516	Marmor	
Bedford	678701	DEU 000537057055	Beacon	Goldwyn	+1375	+0,15	+72	+0,13	+60	136	73	110	116	119	115	124	119	129	110	151	108	BYF	243165	Bedford	
Michigan	804320	DEU 000356333354	Mixer	Gerard	+1338	+0,13	+69	+0,22	+68	141	71	101	118	114	134	132	122	119	97	151	104	BYF	n.a.	Michigan	
Shadow	619069	DEU 000666196663	Shamrock	Freddie	+2309	-0,41	+49	-0,17	+60	131	72	97	113	119	123	126	112	131	121	151	120	BYF	315264	Shadow	
Freestyle	619054	DEU 000666143496	Freddie	Planet	+1961	-0,06	+74	-0,07	+59	135	73	96	112	111	126	123	103	130	119	151	109	BYF	345612	Freestyle	
Gently	680121	DNK 003372305774	G-Force	Super	+1312	+0,17	+71	+0,15	+61	136	71	112	106	119	119	123	105	126	116	151	103	BYF	n.a.	Gently	
Guan	804310	DEU 001266700947	Guarini	Jefferson	+1668	-0,24	+42	+0,04	+61	132	73	105	107	112	125	123	128	126	119	151	99	BYF	135264	Guan	
Ecuador	619074	NLD 000928042401	Edison	Man-O-Man	+1307	-0,10	+44	+0,09	+54	128	71	102	107	121	118	122	120	136	116	150	98	BYF	n.a.	Ecuador	
Booster	804321	IRL 191181710972	Bookem	Sebastian	+1048	+0,15	+58	+0,09	+45	125	73	106	109	117	125	126	126	135	122	150	110	BYF	n.a.	Booster	
Mongole	680110	DEU 000537412443	Mogul	Man-O-Man	+866	+0,35	+70	+0,25	+54	133	71	96	107	117	121	121	110	127	120	150	113	BYF	243561	Mongole	
Georg	151541	NLD 000638768419	G-Force	Legend	+1313	+0,09	+64	+0,08	+53	131	71	116	115	128	115	128	121	125	120	150	106	BYF	324156	Georg	
Gameday	823052	USA 000071181732	Número Uno	Planet	+1492	+0,14	+76	+0,05	+56	134	71	106	110	107	118	117	107	134	114	150	108	BYF	n.a.	Gameday	
Anwar	823029	USA 000070750518	Shamrock	Freddie	+2011	-0,33	+46	-0,11	+56	127	72	99	101	115	124	121	109	131	125	150	119	BYF	n.a.	Anwar	
Meran	679993	NLD 000921224538	Meteor	Auckland	+2118	-0,29	+54	-0,04	+67	139	73	101	118	108	120	121	124	124	108	149	110	BYF	315246	Meran	
Boogani	804306	DEU 001501958755	Bookem	Man-O-Man	+1781	-0,25	+46	+0,01	+61	132	73	107	108	111	131	126	116	129	111	149	110	BYF	243156	Boogani	
Eragon	151544	NLD 000867560215	Eric	Bogart	+1735	-0,13	+57	-0,06	+53	129	71	105	122	116	126	130	120	128	121	149	109	BYF	423651	Eragon	
Moll	823063	NLD 000948156289	Mogul	Snowman	+1820	-0,35	+36	-0,08	+53	126	71	102	100	127	129	130	136	128	111	149	109	BYF	n.a.	Moll	
Schiller BYC	151526	DNK 002371402412	Snowman	Xacobeo	+2157	-0,08	+79	-0,03	+70	142	73	117	118	121	129	135	117	117	90	149	98	BYC	342516	Schiller	
Bilstein BYC	619006	DEU 001602485891	Billard	Ramos	+2074	-0,33	+49	+0,01	+71	138	73	108	104	112	109	113	120	124	109	149	109	BYC	513642	Bilstein	
Bork	823061	DNK 003372305740	Bookem	VH Bismark	+1702	-0,15	+54	+0,02	+60	133	73	98	111	115	121	122	113	130	112	149	113	BYF	n.a.	Bork	
Benjamin	619036	FRA 007261003835	Beacon	Toystory	+1895	-0,09	+68	+0,05	+69	140	73	111	118	119	113	123	126	118	101	149	115	BYF	321456	Benjamin	
Fallon	811441	USA 000071699263	Shamrock	Freddie	+1636	-0,12	+55	-0,02	+53	129	72	97	117	123	134	135	107	126	121	149	109	BYF	351426	Fallon	
Pierre	804309	DEU 001266875354	Pioneer	Mr.Burns	+1247	-0,02	+49	+0,08	+50	127	71	97	93	130	122	124	116	131	116	149	104	BYF	531462	Pierre	
Golden One	619041	DEU 000769717111	Goldday	Mascol ET	+781	+0,05	+37	+0,28	+54	129	73	108	104	112	115	117	121	130	126	149	122	BYF	342516	Golden One	
Label P	917510	NLD 000743121044	Ladd P	Sunrise	+1235	-0,08	+44	+0,34	+73	137	71	111	118	122	116	127	125	127	110	153	112	BYF	Pp	n.a.	Label P
Eragon	588047	NLD 000765039529	Elburn	Spencer 2	+1175	-0,06	+44	+0,29	+66	133	73	102	105	127	123	127	121	128	108	150	104	BYF	342156	Erago	
Fageno	588048	DEU 000120551058	Fidji	Ruacana	+1388	+0,41	+96	+0,14	+60	136	73	98	111	120	117	122	118	126	106	149	113	BYF	234516	Fageno	
Develop	917515	DEU 000537760007	Desk	Malvoy	+1405	+0,27	+83	+0,17	+64	136	71	106	110	121	111	120	113	124	109	149	100	BYF	n.a.	Develop	
Mainstreet	917457	NLD 000871281041	Macon	Fidelity	+1188	+0,07	+56	+0,24	+62	132	71	98	107	125	126	129	113	121	106	146	99	BYF	243165	Mainstreet	
Detail BYC	917520	DNK 000537627876	Desk	Malvoy	+1605	-0,18	+50	+0,05	+60	129	71	105	111	130	120	129	117	123	112	146	102	BYC	n.a.	Detail	
Sacarno	927402	DEU 000355310025	Salve	Carmano	+1020	+0,40	+78	+0,13	+46	125	71	113	112	129	120	130	120	132	107	145	116	BYF	312	Sacarno	
Genaro	917475	NLD 000712463939	Amor Red	Destry	+962	+0,31	+68	+0,18	+48	125	71	118	92	124	129	128	105	128	119	145	115	BYF	234165	Genaro	
Albano	924715	DEU 000666321948	Alchemy	Baxter 2	+1217	-0,01	+50	-0,04	+38	116	71	116	115	119	128	132	134	138	115	144	112	BYF	n.a.	Albano	
Elspe	917427	NLD 000719183933	Elburn	Spencer 2																					