

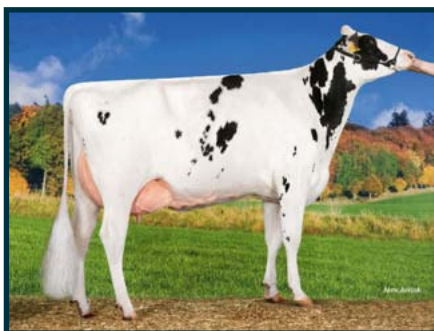


New perspectives in Holstein breeding

Photo: Peggy Schröder

Comment on April proof run of GGI top daughter proven sires

After the April proof run, the top list is completely different. On the one hand, this is due to the influence of the annual base change and, on the other hand, to the multiplicity of high newcomers. In the Holstein top list, the special focus is on **Maserati**. He is not only the highest for RZG, but also high-class regarding conformation. **NOG Brosco**, from the J family of



Maserati daughter Laproma

Jürgen Hintze, is a high newcomer as well and is out of the family of **NOG Mato** and **Eminenz** as well as **Burundi**. **Lennard** increased his breeding value for conformation and confirmed his position in

the top list. Among the 80 newcomers in the Top-300, especially the **Xacobeo** sons **Xiras**, **Xeed**, **Xaroman** and **Norman** stand out. **Xiras** – like **Xeed**, being out of the full sister of **Guarini** – is the highest of them and **Xaroman** outperforms all regarding conformation. More newcomers worth looking at specifically are, amongst others, the components specialist **Le Midi**, the all-rounder **Kuwait**, the outcross bull **Burma** as well as the conformation sire **Amos**.

Despite the very clear changes in April, the well-known bulls are pleasingly stable and this with very high daughter numbers. With RZG 139 and a full 6 point lead, **Morris**

jumps to the top of the Red Holstein top list. Besides high milk yield and positive protein percentages, he is particularly characterized by the transmission for feet and legs. **Lasse P** becomes more and more a solid pillar of polled breeding and is the highest Lawn Boy son. **Malvoy** son **Malden** remains the highest bull for feet and legs in the top list.

Madeira is constant as well. **Dertour** is still the highest of all bulls for overall conformation and he stays strong for longevity and daughter fertility. The full brothers **Detroit** and **Dixieland** (s. **Destry**) can barely achieve their half brother's conformation, but score for production. **Deal P** is also new, and he crowns the strengths of his sire line-up through the polled gene. The Fiction RF sons **Findus** and **Falster** are mainly used for production transmission.

Base shifts for production and relative breeding values April 2015

With the first evaluation run of the year, not only the annual update of the basis for all relative breeding values has been carried out, but also the base shift done every 5 years for milk production single breeding values. Many new bulls, especially **Man-O-Man** sons, enter the Holstein top list. Among the Red Holsteins, **Fidelity** has two new sons at the top.

As recommended by **Interbull**, the basis for milk production traits is updated every 5 years. The basis is now cows born in 2010 (previously born in 2005). With the breeding progress achieved over the past five years, the following changes in breeding

values have been made:

	M-kg	F-%	F-kg	P-%	P-kg
Holstein	-355	0.06	-8.9	0.01	-11.4
Red Holstein	-288	0.05	-8.2	0.00	-10.2

Yearly update

As happens every year in April, there is also the shift of the basis for all relative breeding

values. All German A.I. bulls born 2005-2007 are the basis (previously 2004-2006) which means they have average relative breeding values of 100 within the breed. Changes (breeding value deductions) are given in the table at the end of this article.

If you want to learn more about breeding values, visit our homepage at www.ggi.de

	RZM	RZS	RZE	RZN	RZR	RZKm	RZG	Dairy type	Body	F&L	Udder	RZD	RZKd
Holstein	-1.4	-1.3	-1.6	-1.2	-0.5	-0.7	-2.2	-1.8	-0.9	-0.2	-1.4	0.3	0.2
Red Holstein	-0.5	-1.8	-1.2	-0.6	0.8	0.1	-1.1	-0.9	0.6	-1.1	-1.3	1.0	-0.4



Current proofs of GGI top daughter proven sires

(April 2015)



Holstein

Red Holstein

Name	Herdbook No.	Interbull No.	Sire	Dam's Sire	Milk-kg	Fat-%	Fat-kg	Protein-%	Protein-kg	RZM	Rel. RZM in %	Daughters	Herds	Dairy type	Body	Feet & Legs	Udder	RZE	RZS	RZN	RZR	RZG	Calving ease	Brachyspina	Polled	aAa	Name
Maserati	637272	DEU 000664127354	Man-O-Man	Pronto	1332	-0.04	48	+0.01	46	128	95	202	72	111	117	134	124	136	117	121	117	148	112	BYF		243165	Maserati
NOG Brocco	491135	DEU 00035358153	Bronco	Jefferson	2136	-0.24	57	± 0.00	71	144	89	63	25	104	105	109	119	117	107	115	100	147	96	BYF		342516	NOG Brocco
Lennard	822437	DEU 000353831144	Legend	Ramos	1042	+0.22	64	+0.12	48	132	90	88	53	114	102	117	102	111	117	122	117	145	105	BYF		153624	Lennard
Mont Blanc	637271	DEU 000664079998	Man-O-Man	F B I	2018	-0.28	48	-0.06	61	137	88	92	55	119	124	123	100	120	110	111	108	142	103	BYF		432561	Mont Blanc
Ironman	506511	CAN 000106372011	Man-O-Man	Shottle	1627	-0.30	31	+0.02	56	132	93	168	65	112	102	124	99	112	99	123	108	141	80	BYF		324165	Ironman
Shirocco	804276	NLD 000886454331	Super	Goldwyn	1447	-0.29	26	-0.01	48	127	88	74	22	132	96	106	130	124	107	120	114	140	101	BYF		n.a.	Shirocco
Dotch	822436	DEU 001503818433	Dotson	Elegant	1973	-0.18	58	-0.09	56	135	90	90	51	87	100	120	94	103	96	111	118	140	109	BYF		312546	Dotch
Burundi	149941	DEU 000353931196	Bronco	Goldwyn	1616	-0.15	47	-0.02	52	132	83	34	28	99	101	114	115	115	109	113	107	139	118	BYF		n.a.	Burundi
Maximum	678170	DEU 000769509874	Man-O-Man	Laudan	1090	-0.10	33	± 0.00	37	121	95	303	220	105	71	112	101	97	112	131	124	139	126	BYF		234165	Maximum
Enzo	675261	DEU 000534901479	Encino	O-Man	1857	-0.22	49	+0.01	64	139	95	123	106	90	99	108	78	88	113	116	107	138	112	n.a.		312546	Enzo
Stalone	804210	DEU 001270523676	Stylist	Toystory	1798	-0.10	60	+0.09	71	145	96	196	42	105	73	98	90	85	110	114	89	138	120	n.a.		312546	Stalone
NOG Mavali	491103	LUX 000198876645	Man-O-Man	Goldwyn	1212	+0.12	61	+0.05	46	131	96	260	99	112	91	115	112	113	95	115	100	138	107	BYF		324156	NOG Mavali
Lets-Go	678168	NLD 000543462798	Legend	Stol Joc	957	+0.21	60	+0.34	67	144	92	170	133	98	115	102	92	100	111	104	100	137	100	BYF		n.a.	Lets-Go
Giabo	677301	DEU 000536124807	Gibor	Shottle	1294	-0.18	32	+0.05	49	128	93	122	84	88	93	108	91	94	114	125	113	137	105	BYC		315426	Giabo
NOG Maccolo	491119	DEU 000354120415	Man-O-Man	Shottle	1499	-0.14	+44	-0.01	+49	130	87	87	35	116	101	115	92	104	112	121	109	137	115	BYF		135264	NOG Maccolo
Man Igloo	822418	CAN 000106546094	Man-O-Man	Goldwyn	1080	-0.08	+34	+0.10	+47	128	90	103	63	115	97	121	101	111	111	111	111	137	108	BYF		132645	Man Igloo
Meido	568581	DEU 0001210032478	Man-O-Man	Goldwyn	894	+0.15	+51	+0.17	+47	131	95	250	132	87	98	110	106	105	97	116	111	136	107	BYF		423615	Meido
Pelegrino	638593	DNK 003372304303	Planet	Laudan	1691	-0.16	+49	-0.05	+52	132	95	184	103	114	89	99	115	107	110	120	96	136	106	BYF		351426	Pelegrino
Making	822446	FRA 008051200903	Man-O-Man	Oliver 2	1183	-0.07	+39	-0.01	+38	123	90	106	55	88	103	118	112	114	114	127	98	135	119	BYF		312456	Making
Marcinos	678161	NLD 000534083054	Man-O-Man	Titanic	1072	+0.01	+44	+0.10	+47	129	90	107	76	94	114	120	103	114	107	114	103	135	108	BYF		216435	Marcinos
Le Midi	677908	DEU 000536633316	Legend	Ramos	356	+0.52	+65	+0.15	+27	121	95	205	138	99	102	116	109	112	121	119	114	135	101	BYF		132564	Le Midi
NOG Jeto	490920	DEU 000116481642	Jewel	Laudan	2221	-0.32	+50	-0.18	+54	133	97	269	113	111	78	133	100	109	97	107	98	134	104	BYF		651243	NOG Jeto
Mabuse	841016	DEU 000663524008	Man-O-Man	Shottle	+1077	-0.10	+32	-0.06	+29	117	94	175	97	117	115	128	113	127	111	127	107	134	106	BYF		342156	Mabuse
Xiras	811377	NLD 000889819223	Xacobeo	Goldwyn	+1823	-0.50	+16	-0.15	+45	123	92	159	77	111	93	122	119	121	96	114	111	134	119	BYF		423516	Xiras
Plagiat	822420	DEU 001501013201	Planet	Shottle	+1601	-0.22	+39	-0.09	+44	126	91	88	57	108	105	112	105	111	112	123	97	134	106	BYF		534162	Plagiat
Pinolo	822339	FRA 002141060248	Planet	O-Man	+1715	-0.15	+51	-0.04	+53	133	95	139	68	108	105	92	109	104	111	117	97	133	106	BYF		342156	Pinolo
Jugador	811214	ITA 019990478137	Jardin	Finley	+1934	-0.38	+33	+0.09	+75	143	93	84	58	100	118	105	102	108	93	95	96	133	83	BYF		126345	Jugador
Pazzini	822384	NLD 000525966931	Planet	Goldwyn	+891	+0.08	+44	+0.09	+39	124	96	188	82	109	90	106	105	104	117	114	115	133	103	BYF		135264	Pazzini
Lexos	841017	FRA 002215667076	Legend	Buckeye	+947	-0.04	+34	+0.04	+36	121	92	151	99	88	106	120	115	118	115	114	108	132	105	BYF		n.a.	Lexos
Easyjet	840991	DEU 000352878649	Eleve	Lou	+1680	-0.43	+19	-0.10	+45	124	95	128	64	118	94	103	121	114	114	110	113	132	110	BYF		342165	Easyjet
Pernod	148598	FRA 002141060248	Planet	O-Man	+1279	-0.03	+47	-0.06	+37	123	90	69	54	90	98	109	107	106	110	120	107	132	111	BYF		n.a.	Pernod
Sacramento	637086	DNK 004564802808	Socrates	Shottle	+972	+0.17	+56	-0.06	+26	118	89	83	49	102	108	104	119	115	126	124	104	132	92	BYF		n.a.	Sacramento
Monitor	149907	NLD 000543787972	Man-O-Man	Bolton	+786	+0.13	+44	+0.14	+41	126	98	800	407	115	114	103	111	114	101	117	111	132	107	BYC		423165	Monitor
Gismo	677194	DEU 000535854166	Gibor	Shottle	+729	-0.01	+28	+0.07	+31	118	95	145	101	79	92	119	98	101	129	121	112	132	95	BYF		231465	Gismo
Jello	677907	DEU 000536423903	Jeeves	Goldwyn	+318	+0.21	+33	+0.04	+15	109	95	234	178	94	108	127	122	127	117	126	116	132	99	BYC		132654	Jello
Plexon	841024	DEU 001602627458	Planet	Goldwyn	+1343	-0.22	+30	-0.13	+31	117	91	104	56	120	86	108	115	111	100	124	121	132	122	BYF		231456	Plexon
Omagic	674301	DEU 000580388142	O-Man	Lambada	+1345	+0.05	+58	-0.03	+42	128	95	120	80	74	85	112	83	87	103	114	119	132	114	n.a.		n.a.	Omagic
Norman	149936	DNK 004109204178	Xacobeo	Goldwyn	+640	+0.09	+34	+0.22	+43	126	84	45	34	110	90	119	121	119	115	104	100	132	112	BYF		n.a.	Norman
Manex	822453	DEU 001501013217	Man-O-Man	Baxter 2	+1039	-0.09	+32	-0.05	+30	117	86	87	52	102	100	103	117	111	111	125	114	132	99	BYF		345216	Manex
Juwentus	840928	DEU 000663196060	Jewel	Manager ET	+1770	-0.30	+37	-0.13	+45	126	96	134	60	76	88	110	95	94	114	113	111	132	105	BYF		n.a.	Juwentus
Jerado	811320	NLD 000545851587	Jeeves	O-Man	+643	-0.06	+20	-0.01	+20	110	95	143	54	71	95	122	111	110	108	128	124	131	107	BYF		312456	Jerado
Playa	677510	NLD 000530632922	Planet	O-Man	+639	+0.15	+40	+0.14	+36	122	95	173	128	99	102	109	105	107	104	120	110	131	103	BYF		312456	Playa
Elburn	638446	NLD 000359507595	Mr.Burns	O-Man	+1463	-0.33	+22	+0.05	+55	130	99	700	347	100	116	115	106	115	98	104	105	131	91	BYF		312456	Elburn
Bordun	804258	DEU 001304043529	Bolton	O-Man	+636	+0.21	+46	+0.08	+30	120	98	741	184	107	85	122	117	116	120	114	101	131	91	BYC		423516	Bordun
Blue Bay	637089	DEU 000663622761	Bogart	Goldwyn	+701	+0.20	+48	+0.08	+31	121	97	386	146	106	102	115	109	113	1								



Maserati 637272

(Man-O-Man x Pronto x Morty x Mtoto)

CVF BLF BYF
aAa 243165

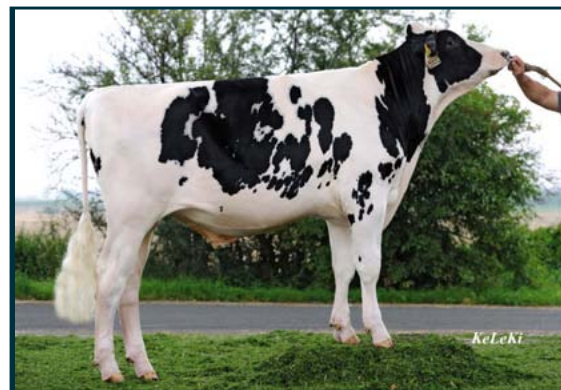


Scan QR code for detailed online breeding values

The new No.1 of the daughter proven Holstein sires, Maserati, gets his first daughter proven breeding value and completely confirmed his genomic figures and, partly, even improved them. The Man-O-Man son out of Conchita EX 90 (s. Pronto) is out of a deep cow family strong for conformation that combines famous names of Holstein breeding in his back pedigree, VG 87 Morty x VG 88 Mtoto x VG 89 Mandel x VG 86 Aerostar x EX 91 Enhancer x EX 91 Chief Mark. Maserati especially convinces with his consistently high breeding values for the functional traits in combination with excellent figures for feet & legs and udder as well as overall conformation. Having good milk yield and components, he can be called a true all-rounder.

At the show "Hessens Zukunft 2015", a progeny group of Maserati was presented and already clearly embodied the mentioned characteristics.

Having all these really positive traits it is more than pleasing that Maserati also offers a positive breeding value for calving ease and, therefore, can be freely used on heifers.



	88	100	112	124
Dairy Character (Index)				111
Body (Index)				117
Feet and legs (Index)				134
Udder (Index)				124
RZE (Index)				136

Proofs 2015/04



Shirocco 804276

(Super x Goldwyn x Rc. Marshal ET x Lord Lily)

CVF BLF BYF
aAa -



Scan QR code for detailed online breeding values

We would like to introduce a new daughter proven sire in the Top-10: Shirocco. The Super son ranks at No.6 and descends from the most famous Dutch cow family, the Ritas. This special cow family unifies both production and longevity as well as very good conformation via the sire line-up VG 88 Goldwyn x VG 88 Boliver x VG 85 Ricecrest Marshall x EX 92 Lord Lily. These characteristics are clearly reflected in Shirocco's transmission profile.

The Super son shows positive figures clearly above average for all breeding values and scores with good conformation and clearly above average milk production as well. It is pleasing that he combines these qualities with strengths for the functional traits.

At the show "Rind aktuell" in Karow, Mecklenburg-West Pomerania, a progeny group of Shirocco was presented recently and the stylish, harmonic animals excelled with good locomotion on outstanding feet and legs as well as highly and firmly attached udders. The icing on the cake of Shirocco's transmission profile is definitely the high RZRobot that recommends him for mating in farms having automatic milking systems.



	88	100	112	124
Dairy Character (Index)				132
Body (Index)				96
Feet and legs (Index)				106
Udder (Index)				130
RZE (Index)				124

Proofs 2015/04



Dixieland 923422

(Destry x Shottle x Lentini RF x Tulip)

CVF BLF BYF
aAa 231456



Scan QR code for detailed online breeding values

Like Maserati and Shirocco, Dixieland also got his first daughter proven breeding value in April. The Destry son out of the bull dam Apina Massia 102 EX 90, popular worldwide, descends from the famous European Apina Massia dynasty. This deep Dutch cow family has already produced lots of successful progeny for shows and breeding. The deeply anchored qualities of this cow family, high components in combination with production and solid conformation are crowned by a little bit of conformation in Dixieland's pedigree.

This already could be seen in the Dixieland progeny group at the show "Hessens Zukunft 2015". The animals presented themselves tall and elegant with well-sloped rumps. The clean feet and legs enabled harmonic locomotion and udders were attached firmly and highly, showing good texture.

Having that much conformation power, we should appreciate that the functional traits are completely positive.



	88	100	112	124
Dairy Character (Index)				129
Body (Index)				104
Feet and legs (Index)				109
Udder (Index)				128
RZE (Index)				126

Proofs 2015/04

April proof run of GGI top G-Genomic sires



As always, we had lots of newcomers in the genomic top list in April. However, it is getting harder for the individual breeder to keep track. If you could limit your selection to the Top-50 one year ago to find the best for your herd, today you have to worry you will miss important sires when focusing on just the Top-100.

The list of the Holstein G-Genomic bulls is still dominated by **Cinema** with more than +3,000 kg milk, despite the base shift. He is followed by his half brother,



Cinema (s. Chevrolet)

Baltikum, who is, therefore, the highest newcomer. They are joined by more top-class bulls from the Heaven family: **Chevalier** and **Beat**. This "family group" is completed by **Malta**.

Interesting sires of sons have established themselves: Anton, with **Adventure** and **Anamur** as well as **Big Point**, with **Bronx** and **Bacalao**. Bube also proved his potential with his early son **Bushman**. Boss, another bull from Germany, clearly emerges as a respectable sire of sons with **Bolaro**, **Bombastic** and **Blossom**.

Despite the many newcomers and the relatively high base shift, "old friends" such as **Background**, **Banesto**, **Lesson**, **Lobach** or **Sinus** are still a good choice to improve your herd. **Epos** remains unchanged, the highest conformation sire on offer in the face of the swift breeding progress.

Sunday P, **Limelight P**, **Ohio P** and **Eagle P**

should also be mentioned and they – together with **Blue P RDC**, **Castino P** as well as **Dover P RDC** – enhance polled breeding. This is also true for **Apoll P**, our No.1 in the top list of genomic Red Holsteins. As well

as excellent production transmission, this top sire, in high demand internationally as a sire of sons, shows no weaknesses and sets new standards worldwide. The sons of Perfect Aiko present themselves very



Apoll P (s. Aikman)

well. They dominate the Top-10 with **Payback**, **Red Power**, **Perfection** and **Present**; the very complete Payball ranks slightly lower. There is also a high polled son of Perfect Aiko: **Pelican P**. On this subject, **Kajak P**,

Kansas P, **Knut P** and **Redtop P** should be mentioned as other polled alternatives. At the same time, the latter is currently the best longevity sire among the Red Holsteins and offers a very interesting blood line and a complete transmission profile. **Krespo PP** also offers this characteristic and all of his progeny are genetical-

ly polled.

Fageno stands out as a sire of sons with a sensational bang – his first sons **Fireman** and **Defago-Red** enter with super figures.

The many high red carriers in GGI's portfolio offer additional choices for Red Holstein and Holstein breeders alike. It is possible to find the who's-who of Holstein breeding in the Red Holstein population with bulls like **Bagno RDC**, **Nugget RDC**, **Season RDC** and many more and spread the different colour without compromising, in the Holstein population so that there will be new possibilities for all breeders.

Moreover, we are proud of the fact that we can also offer sexed semen of our usual high quality for a wide variety of top sires, daughter proven and genomic, like

Maserati and **Cinema**.

You should visit the GGI website frequently under www.ggi.de to track what is on offer, which is constantly updated.

The quality of the German genomic breeding value estimation really shows when looking at how well our

bulls perform with national breeding values among the EuroGenomics partners and, especially, the high gTPI figures that should convince the final doubters and further increase the attraction of German genetics in the future.



Kansas P 917538

(Kanu P x Fidelity x Zabing RDC x Gibor)

CVF BLF BYF
aAa 651423



Scan QR code for detailed online breeding values

Kansas P is a promising newcomer of the April proof run. He attracts attention and shows that polled and milk production can be combined. The Kanu P son out of a Fidelity x Zabing RDC x Gibor is one of the highest milk sires among the polled bulls. However, he does not only shine with milk production. Having excellent feet & legs and very good udders, Kansas P transmits positively for teat length which is in very high demand for Red Holstein breeding at present. Kansas P is also positive for the fitness traits like udder health, daughter fertility and longevity. Moreover, good milkability in combination with the suitability for use on heifers have to be mentioned. So Kansas P can be considered an all-round talent and can be recommended for farms that do not want to compromise.



	88	100	112	124	
Dairy Character (Index)					99
Body (Index)					98
Feet and legs (Index)					136
Udder (Index)					119
gRZE (Index)					126

Proofs 2015/04

All GGI bulls immediately available with the GGI App!



Sirius 151568
(Shan x Robust x Ramos x Shottle)

CVF BLF BYF
aAa 432561

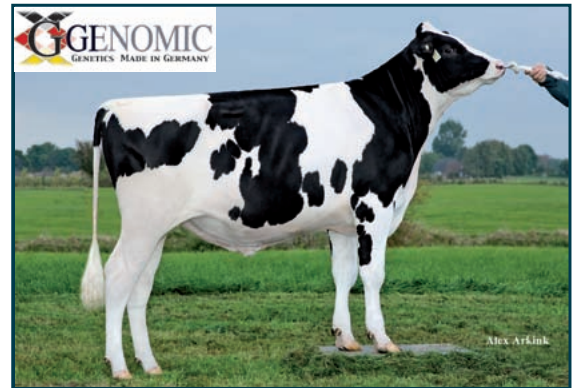
We would like to introduce a bull – Sirius, a Shan son out of the famous Larcrest Cosmopolitan family – who may not cause a furor because of top rankings or extremes in top lists, but who presents himself as very complete and solid sire. Having a strong cow family in the background Sirius shines as all-rounder. He combines good milk yield with high components and good, solid conformation. Sirius offers special strengths within conformation like feet & legs and udder where he has figures far above average.



Scan QR code for detailed online breeding values

Besides solid values for production and conformation, the Shan son scores with great figures for functional traits. Having very high longevity and impressive values for udder health and daughter fertility, he makes every dairy farmer's heart beat faster. More advantages are the suitability for heifers and top milkability.

Offering all these qualities, he should definitely accommodate the term "all-rounder".



	88	100	112	124
Dairy Character (Index)				107
Body (Index)				119
Feet and legs (Index)				120
Udder (Index)				126
gRZE (Index)				131

Proofs 2015/04

Castino P 811493
(Cashcoin x Shottbolt x Goldwyn x September)

CVF BLF BYF
aAa 432156

We present a very interesting polled sire out of a North American cow family: Castino P. The Cashcoin son with the sire line-up Shottbolt x Goldwyn x September does not have Lawn Boy in his pedigree and, therefore, offers an alternative for polled breeding. His dam, Venture Shottbolt Sizzle P, led the US top list of polled animals for a long time and Castino's half sisters belong to the current list leaders. His transmission profile is faultless and offers very good conformation breeding values with special strengths for feet & legs and udder. Having clearly above average milkability as well as excellent udder health and longevity, he impresses for the functional traits as well.



Scan QR code for detailed online breeding values

So Castino P is an outcross for polled and can be used on heifers.



	88	100	112	124
Dairy Character (Index)				121
Body (Index)				99
Feet and legs (Index)				121
Udder (Index)				128
gRZE (Index)				129

Proofs 2015/04

Edelmut 917535
(Ellmau x Sterngold x Zenson x Talent 2 RDC)

CVF BLF BYF
aAa 324156

Edelmut, a son of German sires, enters the stage. The Red Ellmau son descends from a VG 86 Sterngold x Zenson. His transmission profile combines breeding values at a very high level which is very rare. He shows good figures for milk production with positive protein transmission combined with conformation transmission, offering unequaled opportunities. Having clear strengths for feet & legs and udder, the linear is faultless. Edelmut transmits positively for teat length and rump slope.



Scan QR code for detailed online breeding values

The breeding value profile of this Ellmau son is completed by his figures for the functional traits. With far above average longevity and udder health, the very good daughter fertility is an eye-catcher. Due to all these characteristics, Edelmut can be considered a complete sire. So it is not surprising that he also has a high RZRobot that allows using him excellently for matings on robot farms.



	88	100	112	124
Dairy Character (Index)				103
Body (Index)				104
Feet and legs (Index)				125
Udder (Index)				132
gRZE (Index)				132

Proofs 2015/04